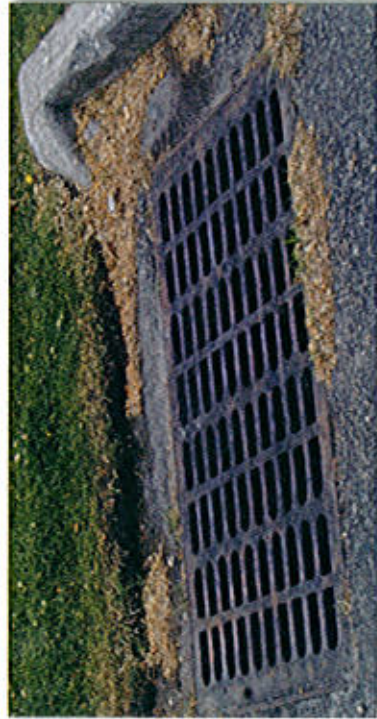


Be the Solution to Stormwater Pollution in Suffolk County

What is Stormwater Pollution?

As rain or melting snow flows over roads, driveways and lawns it can pick up pollutants like motor oil, fertilizers, litter and pet waste.



This "stormwater" that is not absorbed and filtered by the ground is not treated and usually flows into a storm drain system or directly into nearby waterbodies. This becomes stormwater pollution and can be harmful to aquatic life and create human health risks.

Did You Know?

- The Environmental Protection Agency considers stormwater pollution the nation's greatest threat to clean water.
- Your daily activities such as driving a car, lawn maintenance, and waste disposal can be significant sources of stormwater pollution.
- Over 18% of all litter is swept into waterways by stormwater.
- Suffolk County maintains 420 miles of roads that contain over 6,000 storm drains.

How Does Stormwater Pollution Affect Us and the Environment?

Stormwater pollution can have many adverse impacts on people, plants and aquatic life.

- Household hazardous wastes like insecticides, pesticides, paint solvents and auto fluids can poison aquatic life.
- Bacteria and pathogens from pets/wildlife and leaking septic systems can create health hazards that result in bathing beach closures and shellfish harvest restrictions.
- Excess nutrients from lawn fertilizers can promote harmful algal blooms that lower oxygen levels in the water when they decompose. Fish and other aquatic organisms cannot live without sufficient oxygen levels.
- Litter like plastic bags, bottles and cigarette butts are unsightly and can harm, or even kill aquatic life.
- Sediment can cloud water and stress aquatic plants and animals. Excess sediment can also destroy aquatic habitats.



What Suffolk County is Doing to Help Solve the Problem.

- Implementing a comprehensive Stormwater Management Program to reduce and remove sources of stormwater pollution from County owned roads, properties and facilities.
- Upgrading and expanding stormwater control methods on County roads and construction sites.
- Identifying, mapping and monitoring stormwater discharges from County roads and properties.
- Providing education and outreach services to Suffolk County residents.

