

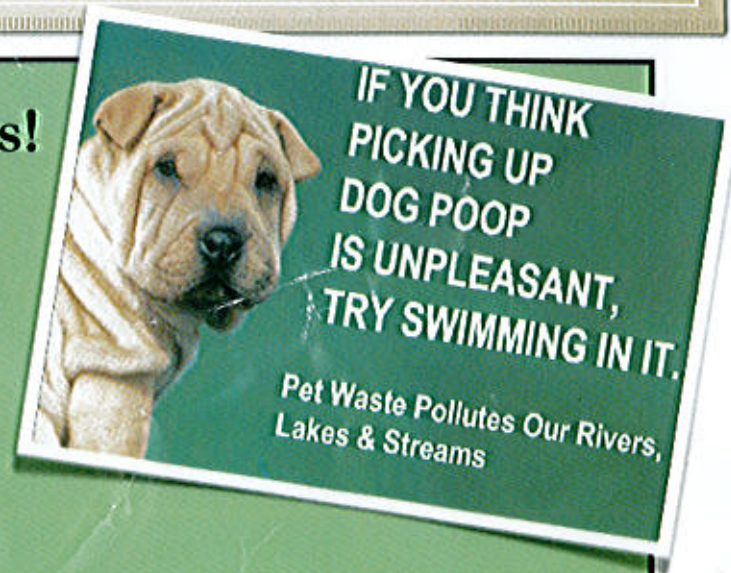
# The Scoop on Pet Poop!

**Please pick up after your pets!**

**Pick it up for our local waters:**

People love walking pets near the water. Unfortunately, pet waste contains disease causing pollutants and bacteria. If left on the ground, rainstorms wash these wastes into the Peconic Estuary, Long Island Sound, or the Atlantic Ocean. There the bacteria cause water quality issues and are often absorbed by the fish and shellfish we like to eat.

Pet wastes are also high in nutrients. Adding too many nutrients to the Estuary can cause harm to eelgrass, cause harmful algal blooms, and lead to low oxygen levels in the water making it uninhabitable for many plants and animals.



**Pick it up for our health:**

These contaminants in local waters can lead to shellfishing closures and/or swimming closures, because if we eat contaminated food, or swim in contaminated water, **we can get sick!** Pet waste can make the local beach unclean and unsanitary for people to play and enjoy.

**Pick it up for the community:**

Its also just the considerate thing to do. You don't like stepping in it and your neighbors certainly don't either!



# Do your part to keep our community and local waters clean and healthy!

## How?

- Bring plastic bags with you when you walk your dog (such as old bread bags, newspaper bags, veggie bags, etc.).
- Tie bags to your dogs leash so you don't forget them.
- Tie the filled bag and drop it in the trash, bury the waste, or flush it if you are connected to a sewer system.
- Look into purchasing a pet waste composter, but don't mix pet waste in with your regular compost.
- Take advantage of bag dispensers and talk to your town or village representatives about making sure they are continually stocked and added in all pet frequented locations (preferably with garbage pails nearby).
- Also share bags and information with other pet owners you meet.

**Make sure to scoop the poop every single time!**

## Why?

There are at least 6000 dogs living on the East End. On average one dog creates about 1/2 a pound of waste per day. That means our local environment receives at least 3000 pounds of pet waste per day! It all adds up, so its important to pick it up every time. Also be aware of local "pooper scooper" regulations that prohibit leaving pet waste where it lies.

**Tell your friends to scoop the poop too!**



**GRUP**  
FOR THE EAST END

[www.EastEndEnvironment.org](http://www.EastEndEnvironment.org)